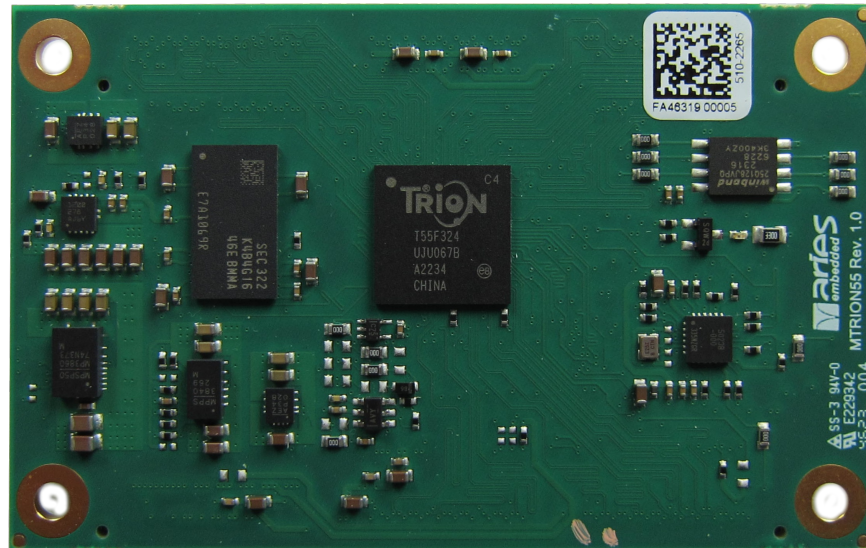


MTrion System on Module

MTrion System on Modules support the Trion® FPGA family and are the ideal solution to get FPGA projects quickly to market. The MTrion SoMs support on-board DDR3 RAM, expose the MIPI-CSI and LVDS signals to the baseboard, they are the ideal fit for digital-logic as well as RISC-V based softcore implementations.

Trion products are designed into a broad range of applications in many diverse markets. The Trion family of FPGAs is supported in customer designs until at least 2033, so are the MTrion SoMs.

Based on the feature set MTrion supports various target markets such as e.g. Industrial Automation, video processing and the Internet-of-Things.



MTrion feature set:

- Trion FPGA in 324 ball FBGA package
 - T20, 1.044 bit Embedded RAM, 36x 18x18 Multipliers, 7 PLLs
 - T35, 1.475 bit Embedded RAM 120x 18x18 Multipliers, 7 PLLs
 - **T55 (Standard for MTrion)**, 2.765 bit Embedded RAM, 150x 18x18 Multipliers 8 PLLs
 - T85, 4.055 bit Embedded RAM 240x 18x18 Multipliers, 8 PLLs
 - T120, 5.407 bit Embedded RAM 320x 18x18 Multipliers, 8 PLLs
- 128 MBit SPI NOR
- 512MByte DDR3 SDRAM
- programmable clock generator and PLL, with optional external reference input
- 161 FPGA GPIO pins
 - including 29 LVDS transmitters and receivers
 - MIPI0 interface, 4 lanes
 - MIPI1 interface, 4 lanes
- Size: 77mm x 48mm
- temperature range 0°C...+70°C
- optional temperature range -40°C...+85°C



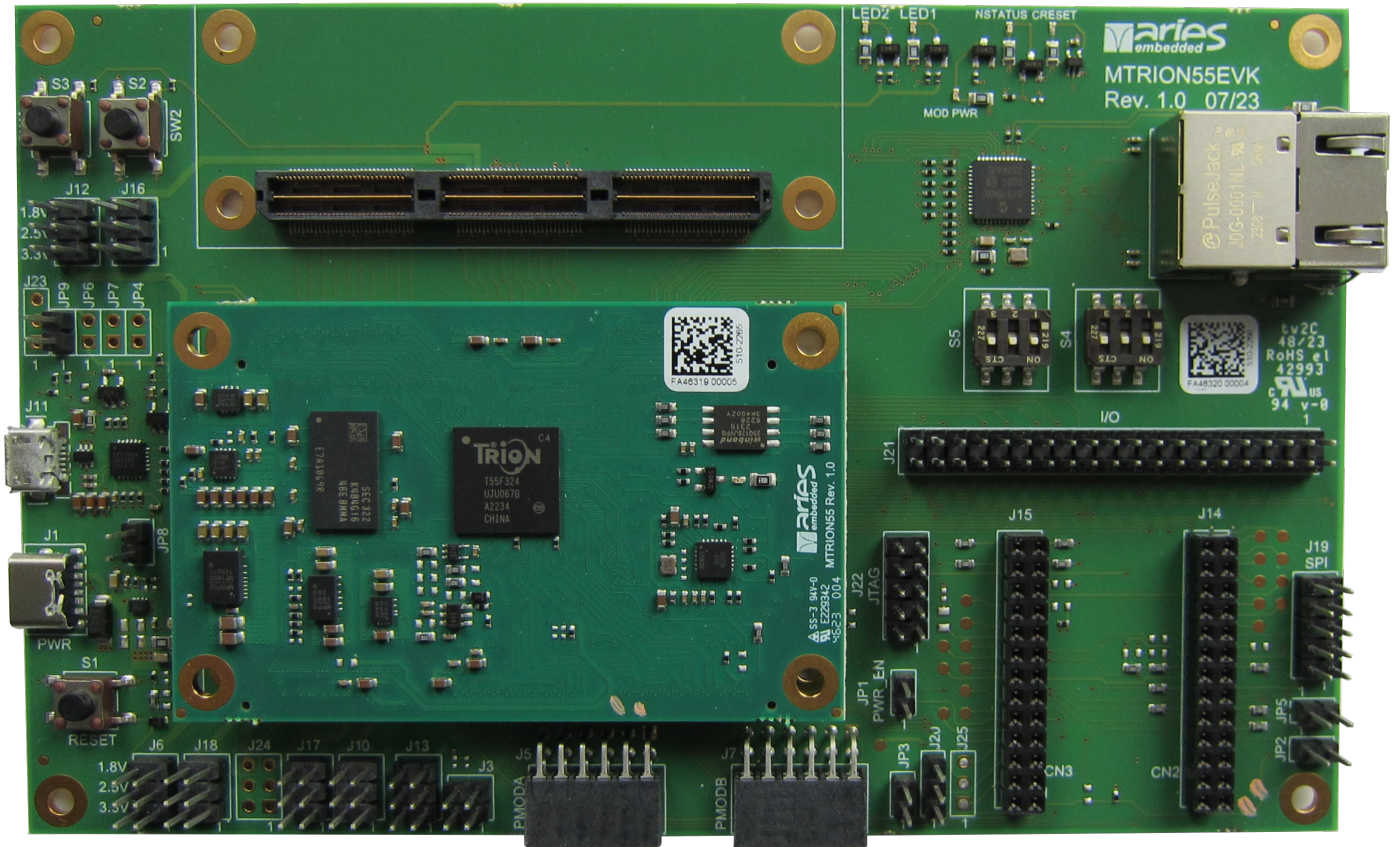
ARIES Embedded GmbH
Schöngeisinger Str. 84
D-82256 Fürstenfeldbruck
Germany

Tel: +49(0)8141.36 367-0
Fax: +49(0)8141.36 367-67

www.aries-embedded.com
info@aries-embedded.de

MTrionEVK Evaluation Kit

The MTrionEVK supports a quick start-up of FPGA projects and can easily be used as a fast-prototype platform.



MTrionEVK feature set:

- suitable for all MTrion SoMs
- Ethernet 10/100MBit
- expansion connector for MIPI and LVDS signals
- pin header for GPIO signals
- pin header for JTAG
- user LED
- user switch
- connector for FT2232H mini module
 - SPI2 accessible via USB
 - JTAG accessible via USB
- CP2102 USB2UART bridge for softcore CPU console

aries
embedded
Intelligence for Industry

ARIES Embedded GmbH
Schöngesinger Str. 84
D-82256 Fürstenfeldbruck
Germany

Tel: +49(0)8141.36 367-0
Fax: +49(0)8141.36 367-67

www.aries-embedded.com
info@aries-embedded.de